

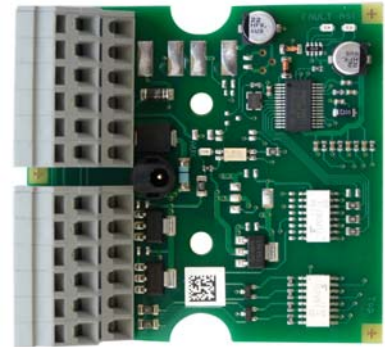
ASi OEM-Module for building services engineering

ASi OEM-Module

ASi Specification 3

AB Slave (up to 62 slaves)

In- and outputs supplied by ext. 24V



The ASi 4I/3O Module, which meets the requirements of ASi Specification 3 is the board based solution for an ASi slave with 4 inputs and 3 outputs.

The inputs and outputs are powered out of separated 24V. They are short circuit and overload protected and can each be loaded

with up to 500mA (outputs). If bus communication is interrupted (master failure), the outputs are switched to their currentless switching state by the watchdog. Connection by spring-type terminals.

Article no.	BW2128
Connection	
Connection	cage clamp terminals
Length of connector cable	I/O: max. 15 m
ASi	
Profile	S-7.A.E
voltage	20 ... 30V DC
Operating voltage	via ASi
Operating current	≤ 70mA
Quiescent current (Input = 0, Output = 0)	≤ 20mA
Input	
Number	4 (electronic)
Output	
Number	3 (electronic)
Capacity	500mA per output from 24V supply
Display	
LED ASi (green)	LED on: voltage at the ASi clamp LED flashing: error, e.g. slave on address 0 (default setting) or peripheral fault
LED FLT/FAULT (red)	LED on: ASi communication error LED flashing: ASi peripheral fault, e.g. no 24V or short circuit at an output, fuse
LED AUX (green)	LED on: 24V available LED off: absence 24V
Environment	
Applied standards	EN 61 000-6-2 EN 61 000-6-4
Operating temperature	-25°C ... +70°C
Storage temperature	-40°C ... +70°C
Protection category DIN EN 60 529	IP00
Maximum tolerable shock and vibration stress	≤ 15 g, T ≤ 11 ms 10 ... 55 Hz, 0,5 mm amplitude
Dimensions (W / H / D in mm)	68 / 70 / 32
Weight	40 g

Terminal connections																
1	3	5	7	9	11	13	15	17	19	21	23	Conne	Terminal A	Conne	Terminal B	
2	4	6	8	10	12	14	16	18	20	22	24	1	+ 24 V	13	+ 24 V _{ext in}	
												2	I1	14	+ 24 V _{ext in}	
												3	+ 24 V	15	0 V _{ext in}	
												4	I2	16	0 V _{ext in}	
												5	0 V _{ext out}	17	ASi +	
												6	O1	18	ASi +	
												7	0 V _{ext out}	19	ASi -	
												8	O2	20	ASi -	
												9	0 V _{ext out}	21	+ 24 V	
												10	O3	22	I3	
												11	n.c.	23	+ 24 V	
												12	n.c.	24	I4	
												ADDR	connection for ASi addressing device			

Programming	Bit setting			
	D3	D2	D1	D0
	Input			
	I4	I3	I2	I1
	Output			
	-	O3	O2	O1
	Parameter bit			
	P3	P2	P1	P0
	not used	0 = On/1 = Off (synchronous I/O mode)	0 = On/1 = Off (data input filter 128µs)	0 = Off/1 = On (watch-dog)

Programming notes:	
IO-Code	7
ID-Code	A
ID1-Code	7 (default)
ID2-Code	E